

Satish Chandra's Iconic Style of Painting

Abstract

Satish Chandra was a veteran artist of India he loves to paint in plain air as well as he recognizes subtle changes in weather and lighting conditions, and how to incorporate contemporary developments, such as textural paintings. He displayed an evident evolution in his painting style throughout his long career. Though he stayed true to the genre of landscape, as his career progressed he began to pay less attention to the details of objects and landscape and more attention to the effects of light and color. He became increasingly fascinated with natural and atmospheric elements.

His palette tends toward strong, fully saturated, high-keyed color, with complementarity playing off each other to generate greater vibrancy; requisite landscape greens are countered by a range of reds, pinks, and violets, and wherever blue appears, orange is not far away.

Keywords: Plain air, Contemporary, Textural Paintings, Landscape, atmospheric elements, Saturated.

Introduction

Satish Chandra occupies a unique position in the realm of Indian art. Apart from being an accomplished painter with a distinctive visual diction, he has also been instrumental in shaping the art milieu of northern plain. Threading the different phases of Satish Chandra's art chronologically, it highlights the artist's abstracted vision.

Satish Chandra (1941-2004) was the prominent artist of North India he was simply known as "Master of Atmosphere." a follower of the Impressionist. His soul mingles with raw nature and reflects the eternal beauty of creation, his palette is full of vivid color. He rejected the traditional approach to landscape painting and instead of copying old masters he had been learning the nature itself and observed variations of colour and light caused by the daily or seasonal changes.

Chandra's each stroke is clearly articulated and related to other strokes to form intricate smaller compositions within the larger whole.

It is the forceful, clearly defined brushstrokes, more than qualities of shape or aspects of composition, that give these paintings a vibrant life.

Master of Atmosphere's

Satish Chandra was one of the most renowned landscape painters in India. He was more confident in his art, and love for Nature. He devoted his whole life for painting landscapes. In the end, he had acquired a reputed title 'Master of Atmosphere'.

Chandra believed in painting by layering colors of paint.

Revival of traditional approach of landscape Painting

Satish Chandra was a revival of classical landscape though his subject matter are very common but the way he treated his canvas was unusual and unique, he was very much fond of using "Impasto Technique" that stands Satish as a contemporary painter. When we go through the Satish Chandra's colour palette we feel the essence of the great master



Abdul Salam Khan

Research Scholar,
Deptt. of Performing & Visual Arts,
Mewar University,
Gangrar, Rajasthan

Saroj Bhargava

Professor,
Deptt. of Performing & Visual Arts,
Mewar University,
Gangrar, Rajasthan

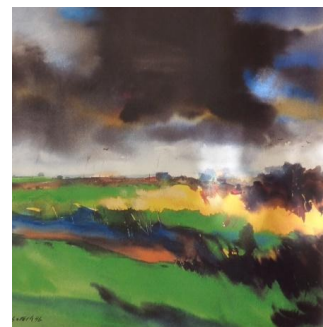


Figure 1- Oil on Canvas



Figure 2- Oil on Canvas

J.W.M. Turner as Chandra also known for his Textural Landscape and Contemporary approach of applying Color's.

As Innovative User

Satish

Chandra is known chiefly for the evanescent aspects of his landscapes and his innovative use of air, light, and colour factors that have prompted critics often to ignore other aspects of his art, such as content, composition, and floral relevance.



Figure 3- Oil on Canvas

That's takes Chandra to range of old master the great Claude Monet and his Water Lillie's series in that sense the Chandra simply known as a Magician of Light and Shades and an Innovative User.

Creative Landscape

By blending biography with critical studies of specific paintings, one can shows how Satish Chandra challenged landscape conventions by complicating them, mingling creative landscape imagery to idyllic nature scenes and showing the effects of the dense forest and northern plain scenes. He was a Prolific and Stylized Painter



Figure 4 - Oil on Canvas

Magician of light and Shades

Satish

Chandra began his career painting nature scenes and learned how to paint in plain air, how to recognize subtle changes in weather and lighting conditions, and how to incorporate contemporary



Figure 5- Oil on Canvas

developments, such as the dramatic effect of light and shades, intensity and psychological values as well as aesthetics of composition play a major role in Chandras subject so Chandra justified title as Master of Light and Shades.

Iconic Style of Painting

His real artistic growth depended on his further exploring what came to be known as the his iconic style of paintings which included wider, more obviously painterly brush strokes, brighter color , use

of turquoise blue, cadmium yellow, sap green and evanescent lighting effects, and the inclusion of all natural subject matter.

Explorer of Color

According to impressionist believe nature never have any outlines. The whole painting is just blobs and smears of color. Chandra fascinated about to show the changing colors and shadows during the day as a result many time he painted this same Spot as a subject.

Successor of Light's and Shades

Chandra loved to paint the northern plain, the Messy Jungle more than anything it gives the unique and unmatched image as Impressionist to articulate the whole series Chandra used style of layering to paint. He also chose the blossom of his Studio as a subject of study which inspire Chandra to face the day today hurdle and fill with fresh energy. In his blossom series Chandra liked to wash technique wet on wet method used water color as a medium.



Figure 6- Oil on Canvas

The Impressionist

Chandra painted many things, but he is probably best known for his beautiful innovative form less Tree, wide and endless sky, contrast color scheme, bunch of birds, color prospective.

Analysis of Satish Chandra's Motifs

Chandra occupies a unique position in Indian art. Apart from being an accomplished painter with a distinctive visual diction, he has also been instrumental in shaping the art milieu of northern plain. The polyphonic value is the result of his abilities as a colourist and skill to strike the right note through a flawless symbiosis between form and content.



Figure 7 - Oil on Canvas

His art work an imagined experience, rather than annotations of the temporal world.

Aim of Study

Satish Chandra occupies a unique position in the realm of Indian art. Apart from being a consummate painter with a distinctive visual diction, he has also been instrumental in shaping the art milieu of northern plain. This dual facet is the axis of the research. Threading the different phases of Satish Chandra's art chronologically, it highlights the artist's abstracted vision.

Despite the realistic connotations, his art successfully sculpts away the apparent references to the objective world to evoke a multiplicity of meanings. The polyphonic value is the result of his abilities as a colorist and skill to strike the right note through a flawless symbiosis between form and content.

His art work an imagined experience, rather than annotations of the temporal world. Meditative and classical, his art also reflects contemporariness, a distinctive fusion that encompasses many of the trials and tribulations of our modern era, albeit in a measured accent.

The narrative also underlines the legendary role of Satish Chandra in creating interactive platforms for artists across the country. His invaluable contributions in shaping the aesthetic values Landscape. Interposed with anecdotes and analytical insights, this research portrays the persona of a reticent artist, whose paintings and exemplary social role continue to inspire art lovers across generations.

Conclusion

He has brought a new dynamic into landscape painting, reinvigorating it in ways suited to a contemporary sensibility. Satish Chandra has achieved an exciting new synthesis, one which manages to break out of the traditional canvas confines, not to satisfy an arbitrary need to invent but out of a need to register a wide arc of visual stimuli, to replicate both the dynamic of seeing and the dynamic of an ever-changing visual field. His paintings tantalize the mind through the tensions between the elusive image and the articulated painting process, at the same time as they delight the eye through sensuous color and verve of paint application.

Despite the realistic connotations, his art successfully sculpts away the apparent references to the objective world to evoke a multiplicity of meanings. The polyphonic value is the result of his abilities as a colourist and skill to strike the right note through a flawless symbiosis between form and content.

Acknowledgement

Authors are thankful to the Head of Department, Department of Performing & Visual Arts, Mewar University, Gangrar, Chittorgarh for providing valuable times and analytical data.

References

1. Meenakshi Chandra, *Master of Atmospheres*, Roli Publication, 2006.
2. Ranjit Hoskote, *the Times of India*, Mumbai, 31 March 1990.
3. Suneet Chopra, *Art Critic*, Satish Chandra Catalogue, August 2006.
4. Suneet Chopra, *Art Critic*, Satish Chandra: *Master of Atmospherics* 1st December 2005.

Bibliography

5. "Master of atmosphere" in 2006 a biographical sketch of Satish Chandra life by his wife Menakhshi Chandra.
6. Truth with felt 31 March 1990 *The Times of India* by Ranjit Hoskote.
7. *Master of atmosphere* 1st December 2005 Satish Chandra catalogue by Suneet Chopra, *Art Critic*.

8. *A Great Artist roli books in 2006* by Dr. Mansoor Hassan, luckhnow.
9. *Remembrance Satish roli books in 2006* by SunitaGhai, luckhnow.
10. *A Great Persona roli books in 2006* by Rita Sinha, Director, North Central Zone Cultural Centre, Nagpur.
11. *Master of nature* Suneet Chopra, *Art Critic*, Satish Chandra Catalogue, August 2006.

Journals

12. *Art Journal* (Ranjit Hoskote, *The Times of India*, Mumbai, 31 March 1990)
13. *Journal of Satish Chandra catalogue* (1st December 2005) by Suneet Chopra, *Art Critic*.
14. *Kala of Satish Chandra journal published by razya lalit kala academy, lukhnow.*
15. *Journal Satish Chandra Nature Panorama* by *India Today*.
16. *Appreciation of Satish Chandra northern plain by saffron art gallery.*
17. *Master of atmosphere a journal by dhoomimal art gallery, Delhi.*

Web Link

18. <http://fineartandartist.blogspot.in/2009/05/satish-chandra.html>
19. http://www.rolibooks.com/index.php?option=com_virtuemart&page=shop.product_details&flypage=flypage.tpl&category_id=4&product_id=425&Itemid=5
20. <http://indiatoday.intoday.in/story/exhibition-of-paintings-by-late-satish-chandra-at-habitat-centre/1/180941.html>
21. <http://fineartakademiup.nic.in/annual.htm>
22. <http://www.artprice.com/artist/298470/sintra-satish-chandra>
23. <http://www.gallerieganesh.com/artist/satish-chandra/satish-chandra-6.html>
24. <http://www.saffronart.com/artists/satish-sinha>
25. <http://www.ebay.in/itm/SATISH-CHANDRA-MASTER-ATMOSPHERICS-/271507544635>
26. http://www.indianartcircle.com/dhoomimalgallery/dmg_3.shtml#BM28
27. Corresponding Author: Dr. Saroj Bhargava*
28. Department of Performing & Visual Arts, Mewar University, Rajasthan